

Put Organics
in the green cart or bin.
Ponga los orgánicos en
el contenedor verde.

FLOWERS AND PLANTS
FOOD SCRAPS AND
FOOD SOILED PAPER SUCH AS:



- Meat & Bones / *Carnes y huesos*
- Fruit / *Frutas*
- Vegetables / *Verduras*
- Bread & Pasta / *Pan y pasta*
- Egg Shells / *Cáscaras de huevos*
- Dairy Products / *Productos lácteos*

- Coffee Grounds / *Restos de café molido*
- Coffee Filters / *Filtros de cafetera*
- Tea Bags / *Bolsas usadas de té*

- Wax paper and wax coated boxes / *Envases de papel y carton encerado*

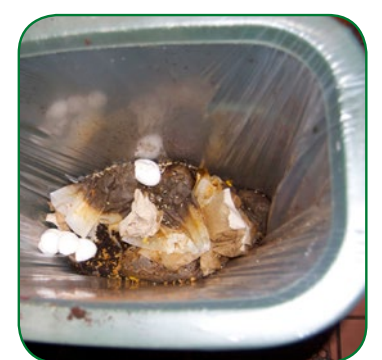
- Napkins / *Servilletas*
- Paper Towels / *Toallas de papel*
- Pizza Boxes / *Cajas de pizza*
- Paper Bags / *Bolsas de papel*
- Takeout Boxes / *Cajas de comida para llevar*

Newspaper, paper bags, or clear plastic bags can be used to line food scrap collection containers in the kitchen.

NO PALLETS

NO BIO-PLASTIC CUPS, LIDS, PLATES, UTENSILS, OR CONTAINERS

NO LIQUID FAT, OIL OR GREASE



www.LivermoreSanitation.com • 925-449-7300

Please visit our website or give us a call for more information.
Por favor visite nuestro sitio web o llame para más información