

Proper Sorting Makes a Difference!

The cleanest and most efficient sorting starts with you! Follow these tips to help keep contamination out of the recycling stream!

MAINTAIN A CLEAN STREAM!

Empty and rinse recyclable plastic, metal and glass food containers before placing them in the blue **Recyclables** cart or bin.



JUST SAY "NO" TO CONTAMINANTS!

Please place only recyclable materials directly into your blue **Recyclables** cart. Garbage, Organics and Hazardous Waste, such as paint and sharps, **DO NOT** belong in the blue **Recyclables** cart or bin. For information regarding proper disposal of hazardous waste, please visit StopWaste.org/hhw or call 1-800-606-6606.



KEEP AN EYE ON SIZE!

Flatten and/or cut boxes to maximize space in your blue cart or bin. Large pieces should be cut to 2' x 2' or smaller.



When in doubt...Find out!

- Visit our website: www.LivermoreSanitation.com for an alphabetized list of what belongs in your **Recyclables** cart or bin, please visit www.LivermoreSanitation.com/residential/resources/containers
- Email us at: info@LivermoreSanitation.com
- Call us: 925-449-7300

The Residential Collection Program Includes:

USED MOTOR OIL AND FILTERS COLLECTION

Up to two gallons of oil and one oil filter per household per week. Put tightly closed oil jug and bagged filter next to your blue **Recyclables** cart on collection day. Contact us for free oils jugs and filter bags.



CELL PHONE AND HOUSEHOLD BATTERY COLLECTION

Put cell phones and household batteries in separate clear zipper-lock style bags (**do not mix together!**) **ON TOP** of your blue **Recyclables** cart on collection day.



UNWANTED CLOTHING COLLECTION

During the first week of July and October gently-used clothing is collected for donation to a local charity. On your regularly scheduled collection day, place items in a tightly tied clear bag next to your blue **Recyclables** cart for pickup.

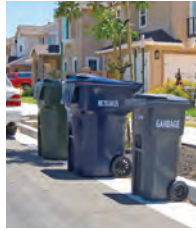


SERVICE REMINDER:

Proper Cart Placement

- ☑ Place carts at the curb by 6:00 a.m.
- ☑ Make sure cart wheels are facing your home.
- ☑ Remove any overflow so that cart lids close completely. Contact us if additional service is needed.
- ☑ Leave three feet between each cart.
- ☑ Avoid placing carts by obstacles like mail boxes, low-hanging tree branches, and parked cars.
- ☑ Keep our bicyclists both young and old safe; don't place carts in bike lanes.

YES!



NO!



Contact us:

Our office hours: 7am - 5pm, M-F
7000 National Dr., Livermore

Phone: 925-449-7300

Website:

www.LivermoreSanitation.com

¿Preguntas?

¡Se habla español!



7000 National Drive
Livermore, CA 94550
925-449-7300
www.LivermoreSanitation.com



**SERVICE DAYS WILL NOT CHANGE
DURING THE WEEK OF LABOR DAY.**



BINNY EATS POTATO SALAD, NOT PLASTIC