

# DO NOT MERGE

## SEPARATE YOUR TRASH



### RECYCLABLES

Paper,  
Cardboard,  
Glass, Metal,  
& Plastic  
Containers  
#1-#7

### ORGANICS

Yard  
Trimmings,  
Food, &  
Food-Soiled  
Paper

### GARBAGE

Landfill  
If not  
recyclable or  
compostable

## Need Help?

StopWaste offers free help to lower costs, increase efficiency, and protect the environment through recycling improvements. For more information visit: [www.stopwaste.org/recycling/businesses-institutions](http://www.stopwaste.org/recycling/businesses-institutions).

Livermore Sanitation offers:

- Free waste assessments
- Recycling training
- Recycling tote bags
- Food scraps collection containers (kitchen pails)

Contact us at:

[www.LivermoreSanitation.com](http://www.LivermoreSanitation.com)  
or 925-583-3517 for more information.

**STOPWASTE**  
at home • at work • at school

Livermore  
Sanitation

# Keep Recyclables Clean!

*Proper sorting and preventing contamination is a must! Strict contaminant thresholds have been applied to the recyclables we export.*

## What Do We Do Now?

- **Keep recycling!**
- **Avoid contamination.** For downloadable posters of what belongs in your blue **Recyclables** cart/bin, please visit: [www.livermoresanitation.com/multifamily/resources/](http://www.livermoresanitation.com/multifamily/resources/).
- **See proper sorting and reduction tips inside!**  
Thank you!



925-449-7300  
[www.LivermoreSanitation.com](http://www.LivermoreSanitation.com)

## The Cleanest & Most Efficient Sorting Starts With You!

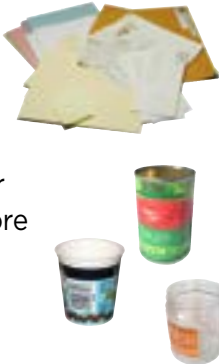
### SUPPORT THE SORT!

Please place only recyclable materials directly into your blue **RECYCLABLES** cart or bin. Keep items loose, do not use plastic liner bags.



### KEEP IT CLEAN!

Empty, scrape, wipe, or rinse recyclable food containers and make sure paper is clean and dry before placing in the blue **RECYCLABLES** cart or bin.



**KEEP AN EYE ON SIZE!** Corrugated cardboard and paper boxes should be flattened and large pieces cut to 2' x 2' or smaller. This will maximize space in your blue **RECYCLABLES** cart or bin.



For downloadable posters, guides, and more please visit:  
[www.livermoresanitation.com/commercial/publications-resources/](http://www.livermoresanitation.com/commercial/publications-resources/).

## Avoid Wishcycling

By properly sorting items into the correct cart or bin, you can:

- reduce contamination,
- prevent damage to sorting machinery,
- keep employees safe,
- and keep recyclable items out of the landfill.



### THESE ITEMS BELONG IN THE GARBAGE CART OR BIN:

- Chip/snack packaging
- Plastic film/bags
- Styrofoam (*blocks, cups, food ware, packaging peanuts*)
- Crockery/dishware/glass bakeware
- CDs & VHS tapes
- Plastic plates/cups/cutlery

## When in Doubt...Find Out!

Visit our website or contact us if you have a question.

WEB: [www.LivermoreSanitation.com](http://www.LivermoreSanitation.com)

EMAIL: [info@LivermoreSanitation.com](mailto:info@LivermoreSanitation.com)

PHONE: 925-449-7300