

# Prevent Food Waste

*Californians throw away nearly 6 million tons of food waste each year. This equals 18 percent of all the material that goes to landfills. Follow these tips to prevent food waste.*

**FOOD WASTE PREVENTION TIPS:**

[www.StopFoodWaste.org](http://www.StopFoodWaste.org) &  
[www.SavetheFood.com](http://www.SavetheFood.com)

- **STORE ITEMS PROPERLY** - Learn how to store food best and how long it should stay there.
- **SHOP YOUR FRIDGE** - Get creative and use food you already have on hand.
- **MEAL PLAN** - Use the interactive Meal Prep Mate and Guest-imator tools at [www.SavetheFood.com](http://www.SavetheFood.com).
- **GET SOCIAL** - Follow @Savethefood on social media for recipes, videos and view #Savethefood sightings!

**FOOD RESCUE & FOOD BANK RESOURCES:**

- [www.calrecycle.ca.gov/Organics/Food/Donation/](http://www.calrecycle.ca.gov/Organics/Food/Donation/)
- Tri-Valley Haven Food Bank - [trivalleyhaven.org](http://trivalleyhaven.org) • (925) 449-1664
- Open Heart Kitchen - [www.openheartkitchen.org](http://www.openheartkitchen.org) • (925) 580-1616
- Alameda County Community Food Bank - [accfb.org](http://accfb.org) • (510) 635-3663

**REMEMBER, PROPER SORTING MAKES A DIFFERENCE!**

Put inedible food scraps and food-soiled paper in your **ORGANICS** cart as a last resort.



**Everyone Wins With Green Gifts!**

*Reduce, Reuse, and Recycle this Holiday Season with These Green Gift Ideas!*

- Support a charity or cause by shopping for gently-used treasures at local resale and thrift shops.
- Encourage waste reduction by giving reusable totes, food containers, water bottles and travel mugs as gifts.
- Preserve the planet with environmentally-minded gifts such as learning thermostats, smart light switches and water filters.

**BONUS POINTS!**

Avoid wrapping paper waste by using waste-free packaging such as a reusable tote or kitchen towel!



# Holiday Service Schedule

**THANKSGIVING WEEK:** If your regular collection day is Thursday or Friday, service will be one day later.

**CHRISTMAS & NEW YEAR'S DAY WEEK:** There are NO CHANGES to the service schedule.



WATCH YOUR MAILBOX IN MID-DECEMBER OR VISIT OUR WEBSITE FOR INFO ABOUT HOLIDAY TREE COLLECTION.

NOVEMBER 20 - 26, 2022					
If your collection day is:	Mon. 21	Tue. 22	Wed. 23	Thu. 24	Fri. 25
Your holiday collection day will be:	Mon. 21	Tue. 22	Wed. 23	Fri. 25	Sat. 26

**DECEMBER 25 - 31, 2022**  
There are **NO CHANGES** to the residential service schedule during the Christmas Holiday week.

**JANUARY 1 - 7, 2023**  
There are **NO CHANGES** to the residential service schedule during the New Year's Day Holiday week.

## Contact us:

**Address:**

7000 National Dr., Livermore

**Office hours:** 7am - 5pm, M-F

**Phone:** 925-449-7300

**Website:**

[www.LivermoreSanitation.com](http://www.LivermoreSanitation.com)

**¿Preguntas?  
¡Se habla español!**

Printed on recycled paper. Please recycle again!



7000 National Drive  
Livermore, CA 94550  
925-449-7300  
[www.LivermoreSanitation.com](http://www.LivermoreSanitation.com)

**HOLIDAY SERVICE SCHEDULE INSIDE!**

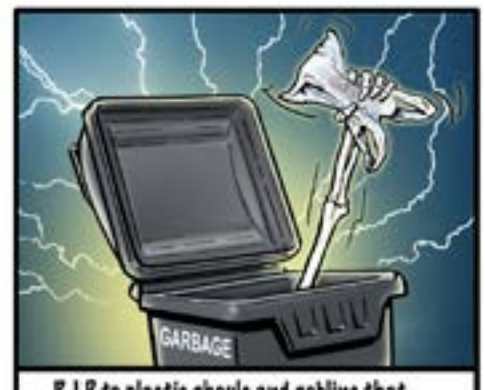
## SPOOKY BAGS BELONG IN THE GARBAGE



Plastic bags can be **SCARY** if they end up in the Recycling cart...



And even more **FRIGHTENING** if they end up in Binny!



**R.I.P.** to plastic ghouls and goblins that belong in the garbage. For more info visit: [LivermoreRecycles.org](http://LivermoreRecycles.org). If you **DARE**.